



Screen
Auckland

KUMEU FILM STUDIOS

AUCKLAND, NEW ZEALAND

aucklandnz.com/KFS

Welcome to Auckland, the hub of New Zealand's film industry

Ours is a film destination with both style and substance.
Imagination and infrastructure. Looks and talent.
Spectacular landscapes and world-class studios.

From the backlot to the box office, we've got the facilities,
the skills and the locations to make great things happen.



Close up on Auckland

Auckland is New Zealand's largest city and the country's major screen production center. It is a region of stunning and diverse locations, world-class screen infrastructure and creative talent.

We've earned an international reputation as a filming destination that offers a top quality, cost-effective and conducive environment for screen production and post-production. A third of the country's population lives in Auckland, giving us an impressive talent pool to draw from and the most extensive range of facilities, while still offering easy access to other locations in Auckland and the rest of New Zealand.

WHO WE'VE WORKED WITH

Auckland has a wealth of producers, line producers, heads of department and crew experienced in working with international film and television partners. They are renowned as experts in fast turnaround productions. Auckland has played host to many international producers, including:

- BBC
- Disney
- The Walt Disney Company
- The Disney Channel
- The Weinstein Company
- Lakeshore Entertainment
- Paramount Pictures
- ABC Networks
- Starz Entertainment
- Sony Pictures
- Columbia Pictures
- Warner Brothers
- Walden Media LLC
- Nickelodeon
- 20th Century Fox
- Netflix
- MTV/Sonar Entertainment
- Stephen David Entertainment
- Gravity Pictures
- Saban

WORLD-RENOWNED SKILLS AND TALENT

Auckland gives you direct access to New Zealand's impressive network of world-class screen industry professionals. The country's actors, heads of department and producers have worked on outstanding and diverse international feature films and television series shot both here and around the world, including:

- Avatar
- The Hobbit trilogy
- Alice in Wonderland
- The Secret Life of Walter Mitty
- Marco Polo
- Spartacus
- The Lord of the Rings trilogy
- The Chronicles of Narnia: The Lion, the Witch and the Wardrobe
- King Kong
- Bridge to Terabithia
- The Lovely Bones
- 30 Days of Night
- District 9
- Elysium
- The Green Lantern
- Crouching Tiger Hidden Dragon 2
- Power Rangers
- Roman Empire
- The Making of the Mob
- Ash Versus Evil Dead
- The Shannara Chronicles
- MEG



Kumeu Film Studios

Kumeu Film Studios is a newly converted screen production complex just 25 minutes from central Auckland.

FIRST-RATE FACILITIES

The 27-hectare site (67 acres) includes extensive stage areas, workshop and manufacture spaces, production offices, 12 hectares (30 acres) of forest, covered Underwater Dive Tank and an outdoor Ocean Surface Tank with a permanent green screen – both are the only water tanks of this size and type in New Zealand.

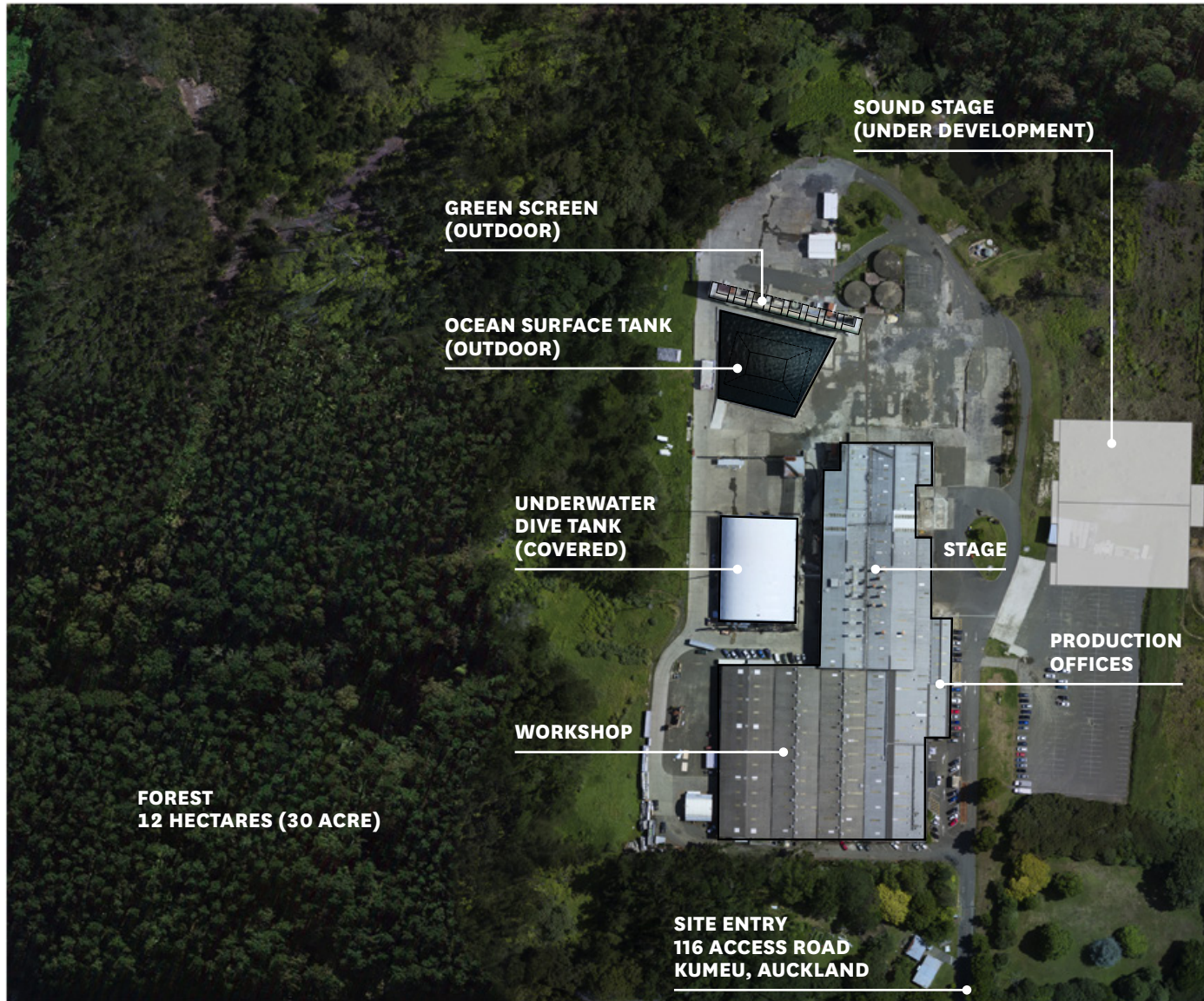
A SUPERB LOCATION

As well as these exceptional facilities, the studio's location gives you easy access and proximity to numerous digital and post-production facilities and experts, cast, crew and behind-the-scenes talent, and other film studios in Auckland and New Zealand.

Kumeu is in Auckland's west, a beautiful region popular with filmmakers for its mix of dramatic black-sand surf beaches, rugged coastline and clifftops, picturesque farmland and pristine native forest.



SITE PLAN



KEY FACILITIES/ INFRASTRUCTURE



GREEN SCREEN

A permanent green screen wall 70.6m x 13m (231ft x 42ft) with a surface area of 920m² (9900ft²)

OCEAN SURFACE TANK (OUTDOOR)

Volume 2.5 million litres (660,430 US gallons / 549,923 Imp gallons), 36m to 54m (118ft to 177ft) length and width 40m (131ft)

UNDERWATER DIVE TANK (COVERED)

Volume 1.265 million litres (334,686 US gallons/278,685 Imp gallons), 18m (59ft) diameter, maximum depth 4.9m (16ft)

WORKSHOP

6160m² (66,305ft²) of workshop and manufacture space/secondary stage area

STAGE

4036m² (43,448ft²) stage area
9m to 11m (30ft to 36ft) in height

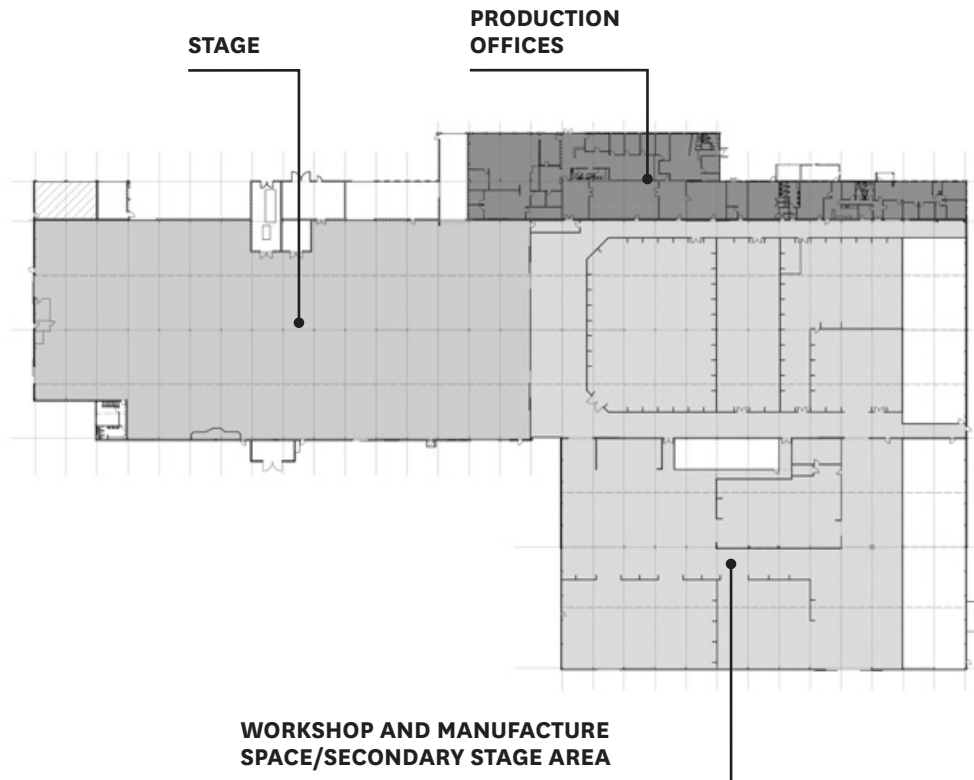
PRODUCTION OFFICES

1215m² (13,084ft²) production offices area with fibre connection and Wi-Fi fit out

BUILDING PLAN

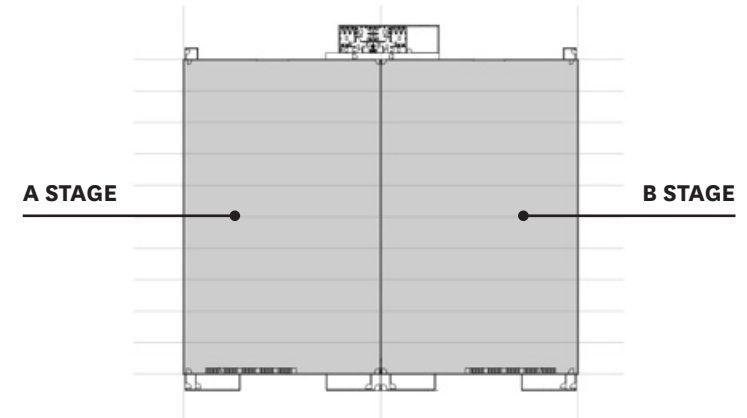
STUDIO

- 4036m² (43,448ft²) stage area 9m-11m (30ft-36ft) in height
- 6160m² (66,305ft²) workshop and manufacture space/secondary stage area
- 1215m² (13,084ft²) production offices area with fibre connection and Wi-Fi fit out



SOUND STAGE (UNDER DEVELOPMENT)

- Two sound stages 2336m² (25,000ft²) each and 14m (45.9ft) minimum internal height to underside of roof trusses supporting the lighting grid
- This is currently under construction, due for completion in February 2018

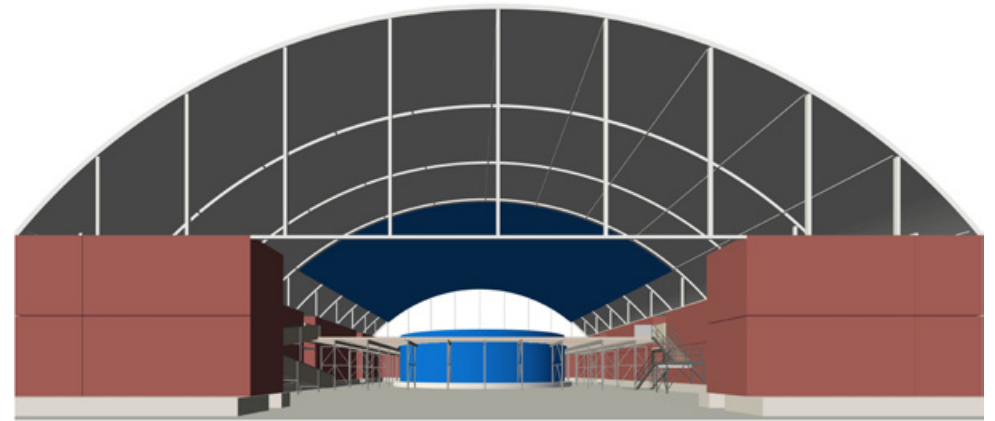
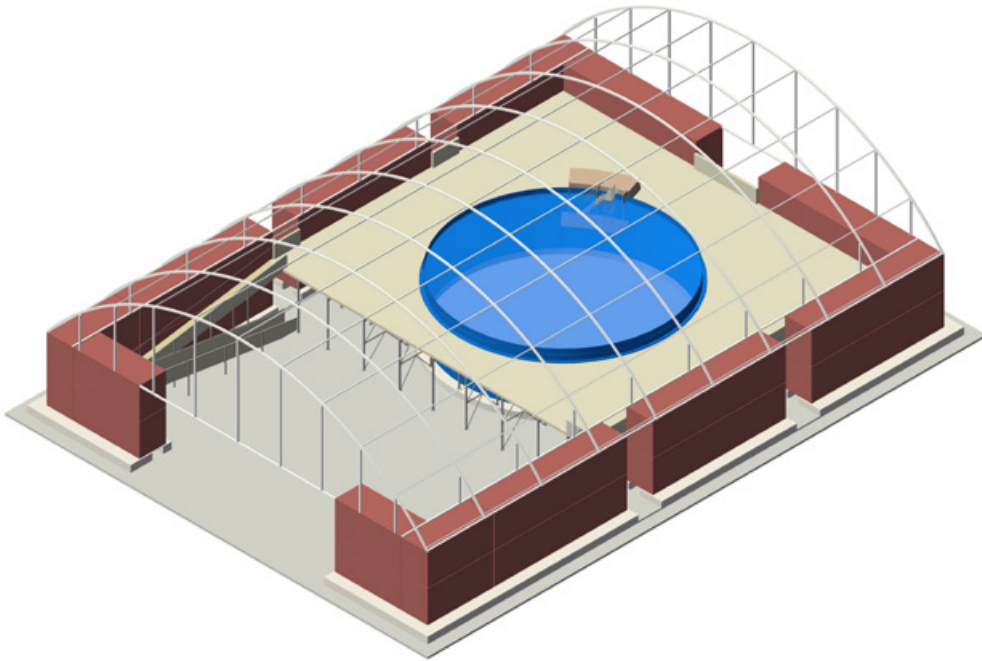


WORKSHOP

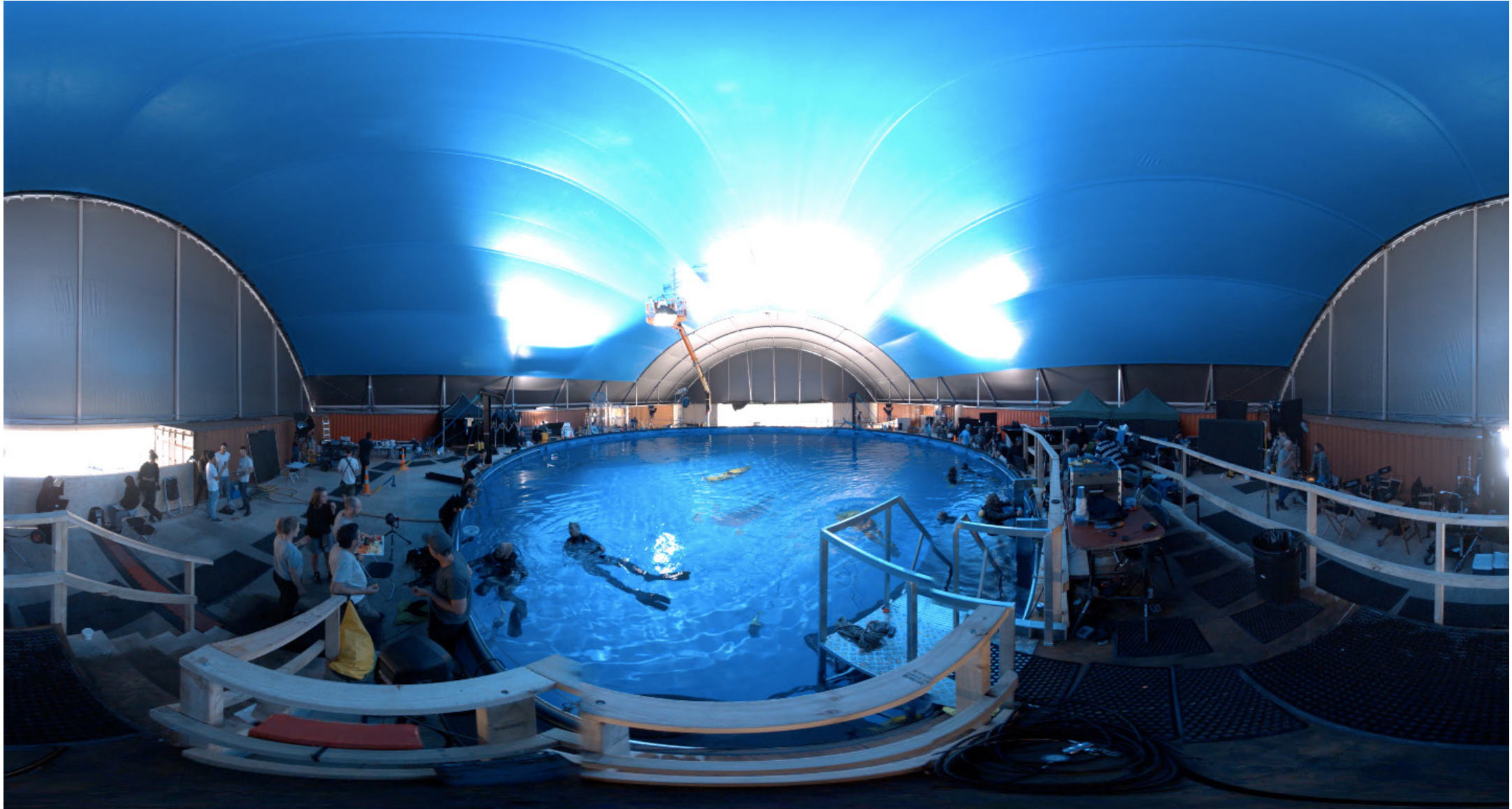


UNDERWATER DIVE TANK (COVERED)

- Volume: 1.265 million litres (334,686 US gallons/278,685 Imp gallons)
- Diameter: 18m (59.5ft)
- Maximum depth: 4.9m (16ft)
- Stair access and 6.8m² (73ft²) platform just below water level for diver access
- State-of-the-art Hydroxypure/Ozone water treatment system that creates crystal-clear water with maximum temperature of 33°C (91°F)



UNDERWATER DIVE TANK (COVERED)



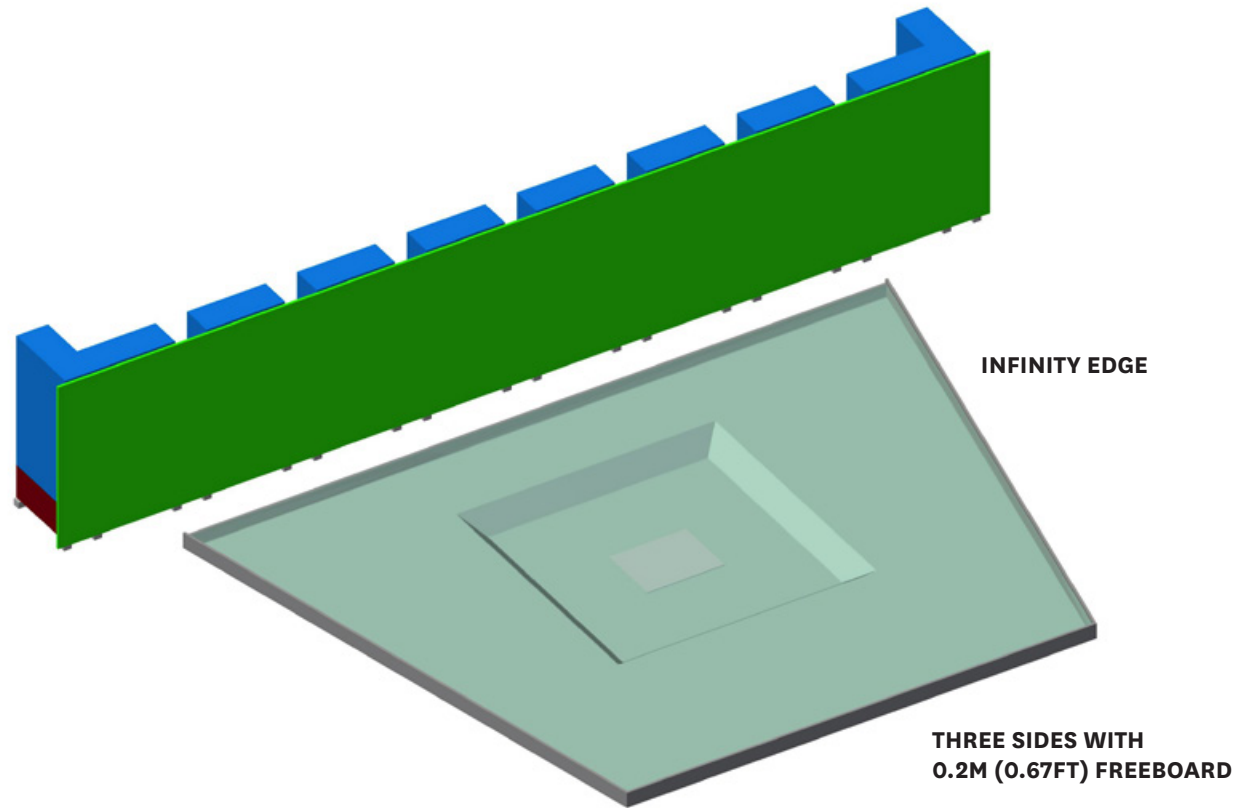
OCEAN SURFACE TANK AND GREEN SCREEN (OUTDOOR)

OCEAN SURFACE TANK

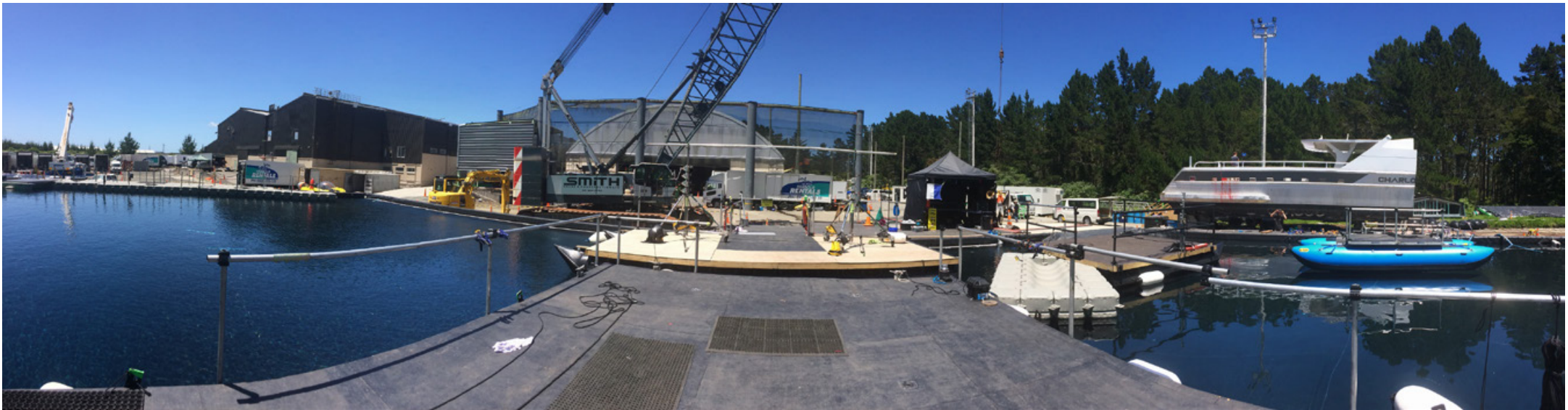
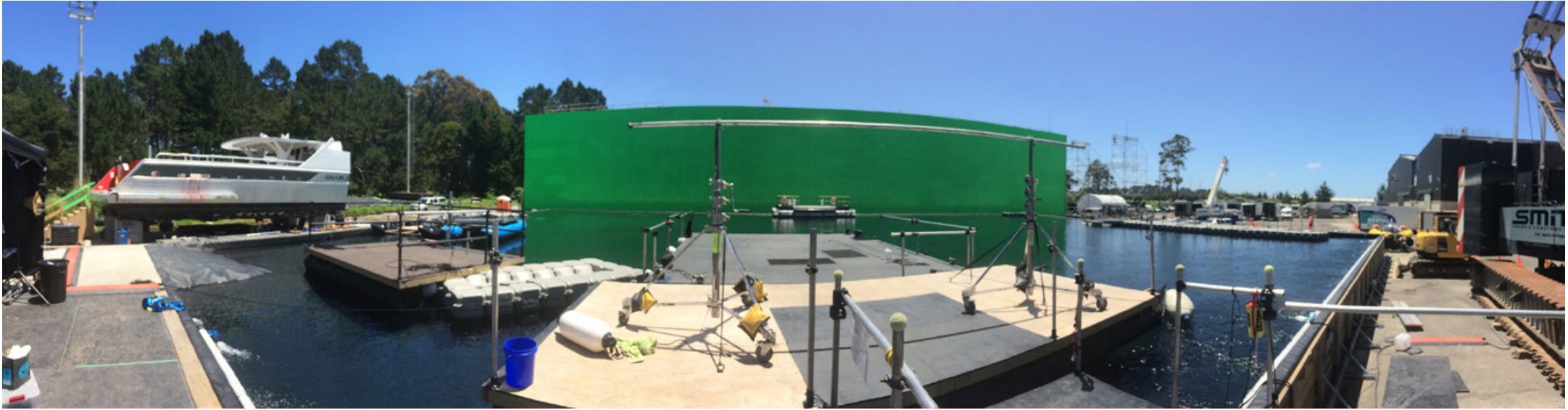
- Volume: 2.5 million litres (660,430 US gallons/549,923 Imp gallons)
- Length: 36m-54m (118 to 177ft)
- Width: 40m (131ft)
- Depth: 0.7m-1.95m (2.5ft-6.4ft) and a pit of 3m (10ft). The pit's base is 17m² (55ft²) with a 9.6m² (31.5ft²) reinforced concrete foundation pad below the liner for attaching hardware
- Vehicle access for launching small boats and other equipment
- Traditional chlorine treatment system with a maximum temperature of 32°C (89°F)

GREEN SCREEN

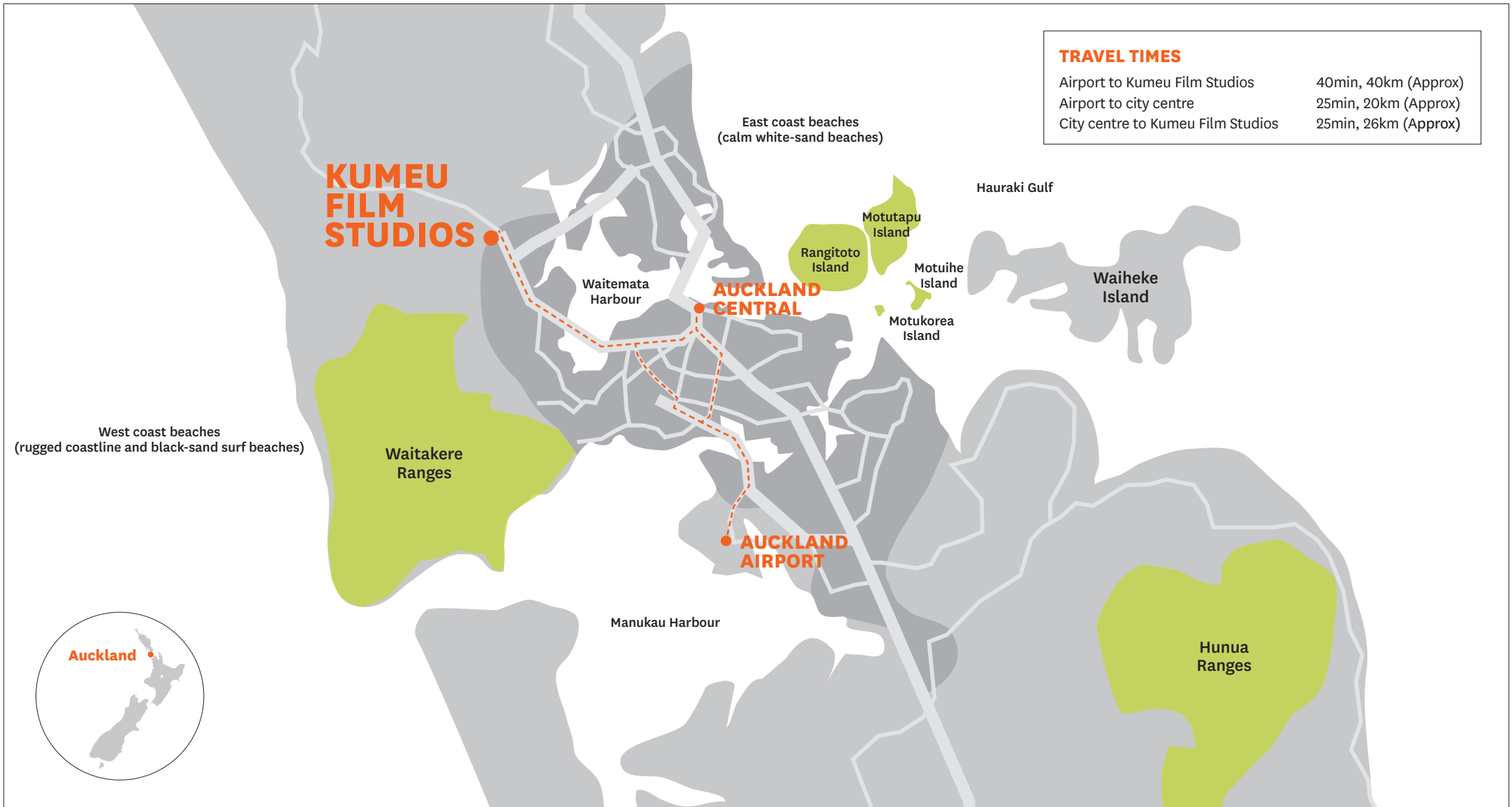
- 70.6m x 13m (231ft x 42ft) with a surface area of 920m² (9900ft²)



OCEAN SURFACE TANK AND GREEN SCREEN (OUTDOOR)



STUDIO LOCATION



CONNECTED TO THE WORLD

DIRECT INTERNATIONAL ROUTES INTO AUCKLAND

Auckland is New Zealand's international gateway, with direct connections to key global markets.



DOMESTIC ROUTES FROM AUCKLAND

The country offers a diverse range of shooting locations, with key production hubs in Auckland, Wellington and Otago/Queenstown.



A scenic landscape at sunset. The sun is low on the horizon, casting a warm orange glow over the scene. In the foreground, there are silhouettes of trees and bushes. The middle ground shows a range of mountains with a lake or bay visible in the distance. The sky is filled with soft, orange clouds.

**We look
forward to
welcoming you
to Auckland,
New Zealand**

For more information

SCREEN AUCKLAND

Harry Harrison

Head of International Attraction
Auckland Tourism, Events and
Economic Development

M +64 21 824 740

E harry.harrison@aucklandnz.com

aucklandnz.com/KFS

Auckland
Tourism, Events and
Economic Development 
An Auckland Council Organisation


AUCKLAND