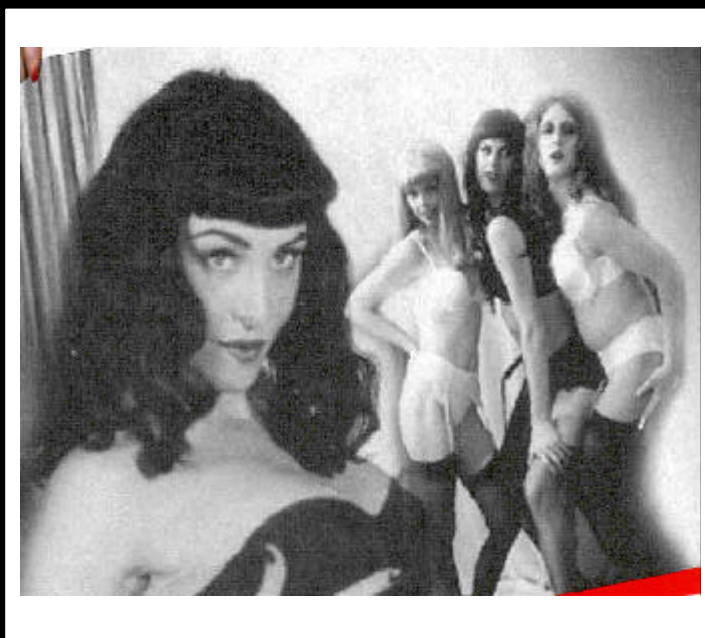


SCI-FI BETTY



Presskit

Official Selection 2001: Sundance Film Festival



TEL: 64 4 382 7680 FAX: 64 4 384 9719 PO BOX 11 546 WELLINGTON

LEVEL 2 THE FILM CENTRE 119 JERVOIS QUAY WELLINGTON NEW ZEALAND
www.nzfilm.co.nz marketing@nzfilm.co.nz

Production Notes

Writer: Gillian Ashurst
Director: Gillian Ashurst
Producer: Vanessa Sheldrick
Production Company: Cowgirl Productions

Colour 18.5 minutes 35 mm 1:1:85 Dolby Digital

Log Line

The mystery of a missing pin-up legend unfolds against a background of fantastic lingerie.

Synopsis

New York 1956 - Struggling Pin-Up Queen Betty makes her last film before mysteriously disappearing...a disappearance with catapults her into cult fame.

Auckland 1996 - A New Zealand performance artist begins to recreate Betty's work...

As the final film is recreated...a pin-up legend reappears.

The Director

Gillian has a degree in philosophy, and a background in journalism. Before taking up a career in film, she spent five years travelling the world and "collecting stories" gonzo style for various magazines.

With her latest film, *Sci-Fi Betty*, Gillian is exploring a more narrative and dramatic style, whilst retaining the unique vision and freshness which made *Venus Blue* so successful.

Gillian is currently in post-production on her first feature film, *Snakeskin*, due for release in 2001.

The Producer

Venus Blue would not have been possible without the fundraising efforts of the Producer, Vanessa Sheldrick. Vanessa had stepped into the role of producer – bringing together an impressive crew and a high quality production on a very small budget. Vanessa has a wealth of experience in the industry, including two years on the hit TV series *Xena Warrior Princess*.

Sci-Fi Betty is not a commercial endeavour with all the cast and crew working for free. The idea being for everyone to gain experience and make a film which is not restrained by the criteria of funding bodies.

Credits

Cast

50s Betty

Lulu Alach

90s Betty

Polly Biagent

Old Betty

Margaret Hicks

50s CAST

Tempest

Darien R Takle

Peggy

Asa Lindh

Irving

John Watson

Little John

Vaun McCallum

The Bouncer

Onno Boelee

The Photographers

Rafe Parks, Frank Grenall, Don Bowie,
Dave Peach, Murray Knock

90s CAST

Tempest

Honey Nougat

Peggy

Meighan Desmond

The Journalist

Marcus Lush

Art Gallery Couple

Marissa Stott and Tom Kane

Skate boys

Mike Orchiston and Luke Williams

Cameraman

Saul Parks

Art Gallery Patrons

Bronwyn Douglas, Robert Dick, Tane Mete, Monty Bhana, Titilia Hamill, Derrick Fitzpatrick, Taiaroa Royal, Andy Wallace, David Cullington, Patrick Twobi, Cara Sherson, Dionne Davis, Ryan Lamp, Rachel Voon and Amber Simpson.

The Press

Karen Lyons, Penelope Hansen, Josephine Moore, Katy Harper and Bronwyn Evans.

Crew

Writer/Director	Gillian Ashurst
Producer	Vanessa Sheldrick
First Assistant Director	Tim Hansen
Third Assistant Director	Anton Steele
Third Assistant Director	Ninakaye Taane
Script Supervisor	Kathleen Thomas
Production Assistant	Fiona Ewen
Production Intern	Saul Parks
Production Designer	Anthony Sumich
Art Director	Ross McGarva
Props Standby	Simon Harper
Props Standby/Props Maker	Daniel Mace
Props Buyer	Pip Brophy
Greensman	Dave Wishart
Director Of Photography	Sharon Aroha-Hawke
Steadicam Operator	Dana Little
Focus Puller	Brendan Holster
Additional Focus Puller	Gaysorn Thavatt
Clapper Loader	Inga Fillary
Additional Clapper Loader	Andrew McGeorge
Stills Photographer	Bronwyn Evans
Key Grip	Dean Maxted
Grip	Gary Illingworth

Crew cont...

Grip	Huw Griffiths
Gaffer	Kimberley Porter
Best Boy	Mike Paauwe
Sound Recordist	Dave Hurley
Boom Operator	Fiona Ewen
Additional Recordist	Alan Seconi
Costume Designer	Katrina Hodge
Costumier	Annette Faulkner
First Wardrobe Standby	Katrina Hodge
Second Wardrobe Standby	Rachel Voon
Standby Asst	Cecilie Bridgford
Standby Asst	Amber Simpson
Makeup/Hair Supervisor	Vanessa Hurley
Makeup Assistant	Holly Shephard
Hair Stylist	Vanessa Smith
Unit Manager	Spencer Faulkner
Unit Support	Reg Gibson
Set Security	Jason Sietu
Catering	Angela Calsey

Telecine by Images / Laboratory Atlab NZ

Camera Equipment Metro films / Filmed on Kodak Eastman Film.

COPYRIGHT Cowgirl Productions 2000